



# Iadiran Telecom



**Coral IPx™**

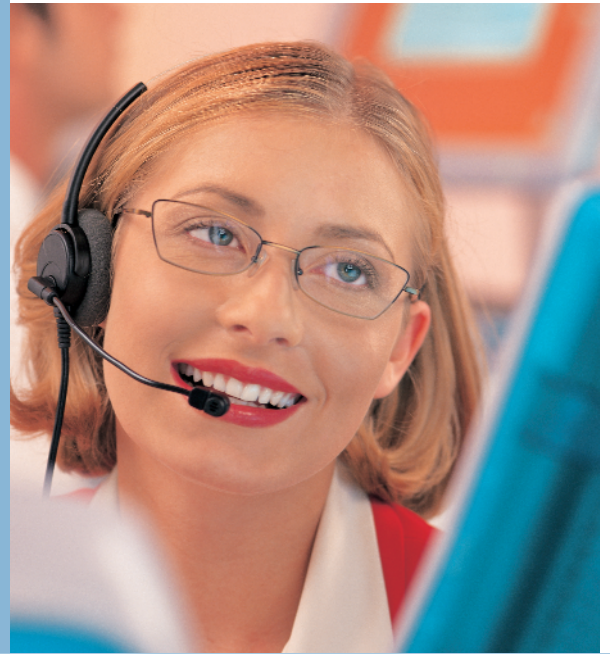
**Converged Communications  
in a Modular Platform**



## The Foundation for Voice and Data Integration

As business communications evolve rapidly to IP-converged technologies, your company must adapt to compete and serve customers effectively. The Coral IPx gives you the flexibility you need to evolve your communications systems to IP technology with the peace of mind that today's investment will be protected tomorrow.

The forward and backward-compatible Coral IPx product family packs all the power and flexibility of Coral® systems into modular units that can be rack, floor or wall mounted. Each model can be used as a traditional switch, a VoIP telephony server or both - adapting easily as your company's needs change.



Modular communications server combining IP technology

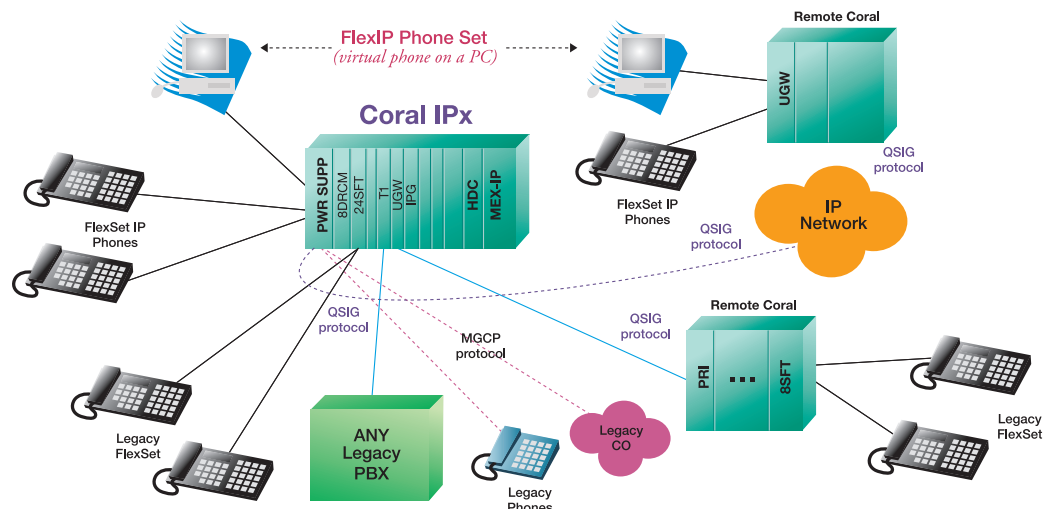


## Complete communications capabilities

Ideal for single deployment or multi-site networks, Coral IPx allows you to take advantage of IP telephony without sacrificing the functionality you need, such as ACD and call center applications, integrated voicemail and wireless capabilities.

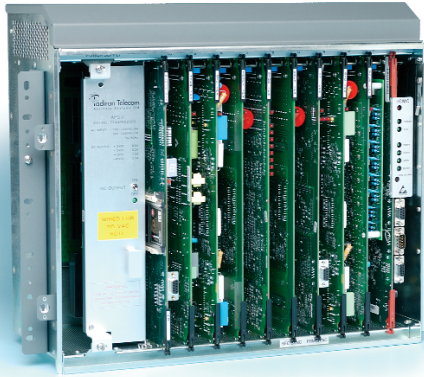
When you're ready to add advanced applications such as unified messaging and pure VoIP, easy migration of hardware, software and telephones protects your investment as new features and technologies become available. The Coral IPx family scales from just a few wired endpoints to over 4000, allowing you to migrate telephones, trunk and station cards, voice messaging, database and common control elements from the smallest to the largest system.

## Coral IPx in a Network Environment



## A Communications Platform For Every Business Need

The Coral IPx family of products was designed to give you the flexibility of selecting the exact size system to fit your company's requirements.



### Coral IPx 500 -- Small to mid-size systems

This compact system was designed with smaller cards that pack all the power of a full-blown Coral server into a space-saving unit. The Coral IPx 500 comes

equipped with 8 slots for legacy and IP gateway interface cards and two 10-slot expansion cabinets, for a total of 448 wired endpoints.

gy with traditional TDM telephony

### Coral IPx 800 - Mid-size systems

Ideal for mid-size offices and branch locations, this robust system features full-size Coral cards that deliver a total converged solution for mid-size businesses. The Coral IPx 800 base unit can accommodate two expansion units, for a total of 720 wired endpoints. For trunk and station side IP telephony, add the Universal Gateway (UGW) card.

### Coral IPx 3000 - Mid to large systems

For businesses requiring in the range of 3000 wired endpoints, the Coral IPx lets you expand by adding up to 16 rack-mounted cabinets. This fully scalable solution features MEX and 4GC common control.

### Coral IPx 4000 - Large enterprise systems

The powerful Coral IPx 4000 provides a complete communications solution for large enterprises needing 4000+ wired endpoints, such as banks and hospitals. Designed for mission critical, high-traffic operations, the Coral IPx 4000 features MCP-ATS and 32GC common control, optional hot standby, and duplicate power support.



## Bottom-Line Benefits

- **Future ready:** The Coral IPx combines IP technology with traditional TDM telephony.
- **Flexible:** The "building-block" design enables your system to adapt as business needs change and grow.
- **Efficient:** The Coral IPx enables networking of multiple branch offices over IP.
- **Investment protection:** The Coral IPx eliminates the risk of becoming trapped with "legacy" equipment that cannot be upgraded.
- **Lower Total Cost of Ownership:** Like all Coral products, the Coral IPx migrates telephones, trunk and station cards, voice messaging, database and common control elements from the small system to the largest.
- **Reliable:** The Coral IPx provides carrier-grade reliability to support mission-critical communications.
- **Proven technology:** Tadiran Telecom has delivered rock-solid, state-of-the-art voice communications solutions for more than 40 years.



## Coral IPx

### Modular communications server combining IP technology with traditional TDM telephony

#### System Highlights

- Provides all the features, capabilities, interfaces and terminals of the Coral communication server
- Provides built in voice/data convergence
- Optimizes space utilization through extensive configuration flexibility
- Fits 19" and 23"-racks, including racks designed to earthquake area requirements (wall mount - IPx 500)
- Provides AC and DC input power supply in every shelf
- Enables connection to E1, T1, PRI, LAN through back-facing RJ45 connectors (future)
- Enables installation in existing standard racks (excluding IPx 4000)
- Allows expansion shelf to be located at remote site (IPx 4000)



#### Corporate Headquarters

Tadiran Telecom Business Systems Ltd.  
18 Hasivim Street, PO Box 450  
Petah Tikva, 49105 Israel  
Tel +972-3-926 2000  
Fax +972-3-926 2310

#### USA

Tadiran Telecom, Inc.  
4 Tri Harbor Court  
Port Washington, NY 11050 USA  
Tel +516-632-7200  
Fax +516-632-7210

#### China

Tadiran Telecom Business Systems Ltd.  
Room 918, Tower Crest Plaza, no 32 MaiZiDianXilu  
Chao Yang District, Beijing 100016 China  
Tel +86-10-84511894/903  
Fax +86-10-84583515

Visit us at our website: [www.tadirantele.com](http://www.tadirantele.com)  
Part #: 72447010153 11-2003

Copyright © 2003 Tadiran Telecom, Inc. Specifications subject to change without notice. Contact your authorized dealer for specifics. Coral, FlexAir, Coral Message Center, Coral QNet, CoraLITE, Coral FlexCT, Coral FlexiCom, Coral FlexSet, Coral FlexIP Softphone, Coral IPx, and iCMC are registered trademarks or trademarks of Tadiran Business Systems Ltd. or Tadiran Telecom, Inc. All other products or services mentioned are the trademarks, service marks, registered trademarks, or registered service marks of their respective owners.